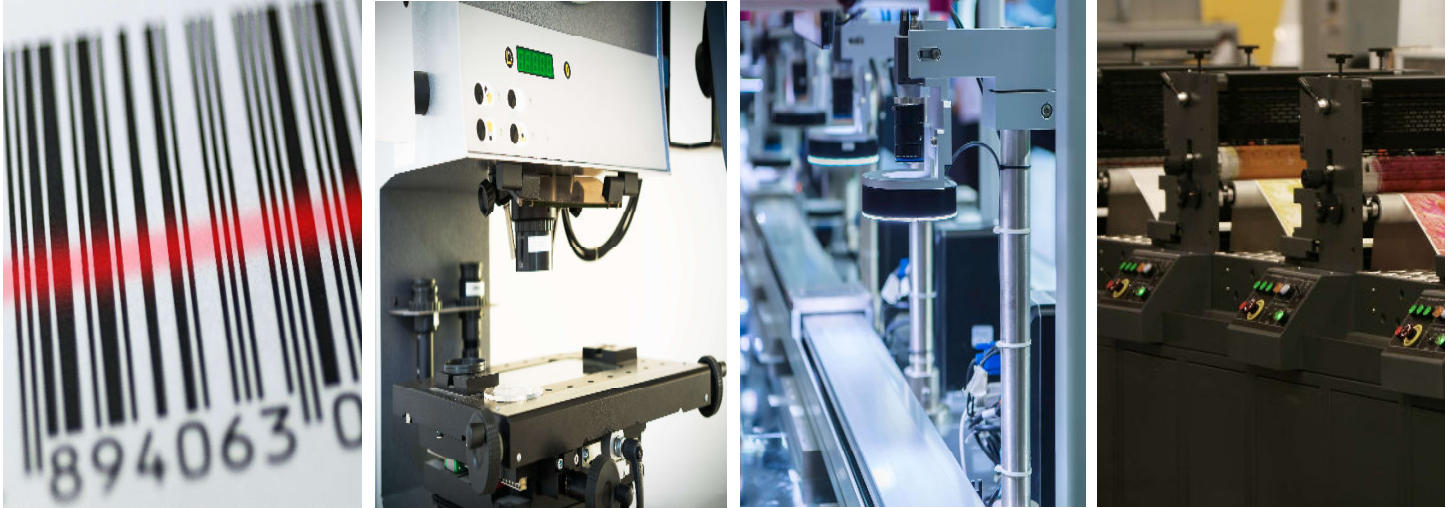


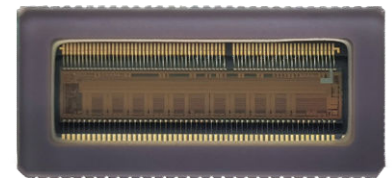
GL3504 Product Flyer



2K/4K LINEAR CMOS IMAGE SENSOR

GL3504 is a line scan image sensor suitable for small format camera integration with C mount lens, the sensor contains one line with 3.5 μ m pixel and four lines with 7 μ m pixel. It could run up to 84kHz with 3.5 μ m pixel line at 12bit output, or up to 172kHz with 7 μ m pixel line at 12bit output. With less ADC depth, the sensor could run even faster.

GL3504 uses on-chip PLL and all required timing is generated by the on-chip sequencer, reducing the amount of external components needed. Output channel multiplexing enables flexibility in FPGA selection. GL3504 enables a cost effective camera solution for demanding inspection applications.



Key Features

- Working Mode 1 :3.5um single line
- Working Mode 2 :7um single/dual/four line
- External Trigger
- Channel Multiplexing
- OB Columns for Post Correction
- On Chip Sequencer

Applications

- Industrial inspection
- Logistics barcode scanning
- Printing inspection
- Rail inspection

Sensor Specifications

Resolution	4096 × 1	2048 × 1	2048 × 2	2048 × 4	2048 × 4
Pixel size	3.5μm × 3.5μm		7 μm × 7 μm		7 μm × 7 μm
ADC	12 bit		12 bit		8bit
Full well capacity	11 ke-		9.3 ke-		9.3ke-
Temporal noise	4.9 e-		4.9 e-		21.2 e-
Dynamic range	67 dB		66.1 dB		52.9 dB
Max. Line rate	84.4 kHz	172.7 kHz	88.3 kHz	44.7 kHz	62.9 kHz
Power consumption	<1.0W		<1.0W		<0.7W
Interface			Sub LVDS		
Chroma	Mono		Mono & Color		Mono & Color

Ordering Information

Sensor Part No.

GL3504-AVM-NCN- AUP
Monochrome, no microlens, Grade P.

GL3504-AVM-NCN- AUE
Monochrome, no microlens, Grade E.

GL3504-AVC-NCN- AUP
Color, no microlens, Grade P.

GL3504-AVC-NCN- AUP
Color, no microlens, Grade E.

EVK Part No.

EVA-3504-CCC, USB interface,
PCB boards

Contact

Gpixel HQ
No. 588 Yingkou Road
130033, Changchun, China

Tel: +86-431-86176682
Email: info@gpixel.com
Website: www.gpixel.com



All rights reserved.
Subject to change without notice