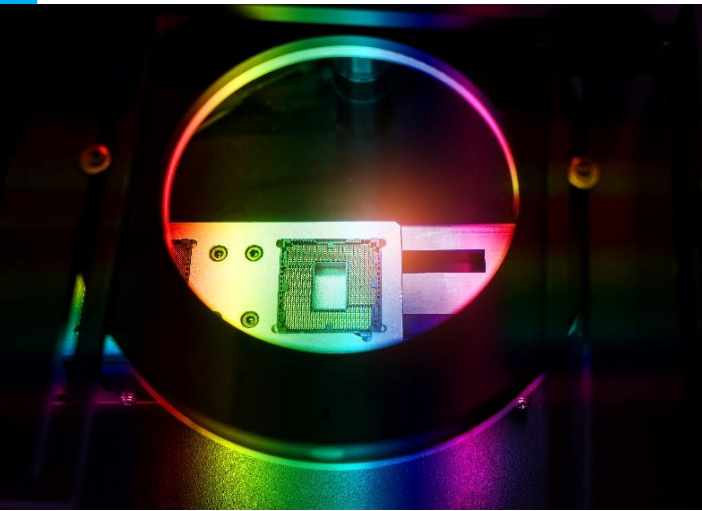


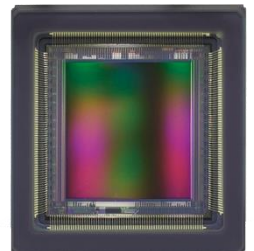
GMAX2518 Product Flyer



18MP GLOBAL SHUTTER IMAGE SENSOR

GMAX2518 has an optical format of 1" and features 18 MegaPixel (4508 × 4096) Global Shutter pixels based on the proven GMAX 2.5 um architecture, operating with true correlated double sampling (CDS) for low read noise and high dynamic range. In addition, the dual light pipe technology provides excellent PLS and angular response, with 32pair of sub-LVDS each run at 960MHz, the sensor output with maximum 30.72 Gbps data, achieving maximum frame rate of 150 fps in 10-bit output and 64 fps in 12-bit output.

The sensor integrates an on-chip sequencer, programmable through SPI, and is designed to be fully pin compatible with **GMAX0505**, **GMAX2509** and **GMAX2505** to significantly shorten time to market for camera manufactures. **GMAX2518** will be assembled in a 19.5 x 20.8 mm 226-pins LGA ceramic package, which is mechanically compatible to fit into an industry standard 29 mm x 29 mm camera housing.



Key Features

- 2.5 um Global Shutter pixel
- > 64% peak QE, < -80dB shutter efficiency
- High data throughput up to 30.72 Gbps
- Mechanically compatible with industry standard camera
- High speed and Good PLS
- Frame rate up to 139fps @10-bit & 64fps @12-bit

Applications

- High Resolution Industrial Inspection
- Machine Vision
- Intelligent Traffic System (ITS)

Sensor Specifications

Resolution	4508 x 4096	Optical format	1"
Pixel size	2.5 μm × 2.5 μm	Photo-sensitive area	11.27 mm × 10.24 mm
Shutter type	Global shutter	Quantum efficiency	> 65%
Full well capacity	8 ke ⁻	Shutter efficiency	1/10000
Dark noise	1.6 e ⁻	Dark current	6.5e ⁻ /p/s @ 45°C
Dynamic range	61.9dB @ 10bit 66.9dB @ 12bit	Frame rate	139fps @ 10bit 64fps @ 12bit
Output interface	32 pairs of sub-LVDS	Channel multiplexing	32/16/12/8/6/4/2
ADC	10/12bit	Max. Data rate	30.72 Gbps
Chroma	Mono & Color	Power consumption	< 1.2W
I/O voltage	1.8V - 3.3V	Package	226 pins LGA 20.79 mm x 19.49 mm

Ordering Information

Sensor Part No.

GMAX2518-AVM-HLT-AU1
High speed, 139fps, 10bit, mono, Grade 1

GMAX2518-AVM-HLT-AU2
High speed, 139fps, 10bit, mono, Grade 2

GMAX2518-AVM-NLT-AU1
Normal speed, 64fps, 12bit, mono, Grade 1

GMAX2518-AVM-NLT-AU2
Normal speed, 64fps, 12bit, mono, Grade 2

GMAX2518-AVC-HLT-AU1
High speed, 139fps, 10bit, color, Grade 1

GMAX2518-AVC-HLT-AU2
High speed, 139fps, 10bit, color, Grade 2

GMAX2518-AVC-NLT-AU1
Normal speed, 64fps, 12bit, color, Grade 1

GMAX2518-AVC-NLT-AU2
Normal speed, 64fps, 12bit, color, Grade 2

EVK Part No.

EVA-2518-HC10 (10bit) / EVA-2518-NC12 (12bit)
USB interface, 3 stacked PCB boards

Contact Gpixel HQ

Building #5, Optoelectronic
Information Industrial Park,
#7691 Ziyou Road,
Changchun, Jilin, China.

Tel: +86-0431-85077785
Email: info@gpixel.com
Website: www.gpixel.com

Scan me for more information:



All rights reserved.
Subject to change without notice