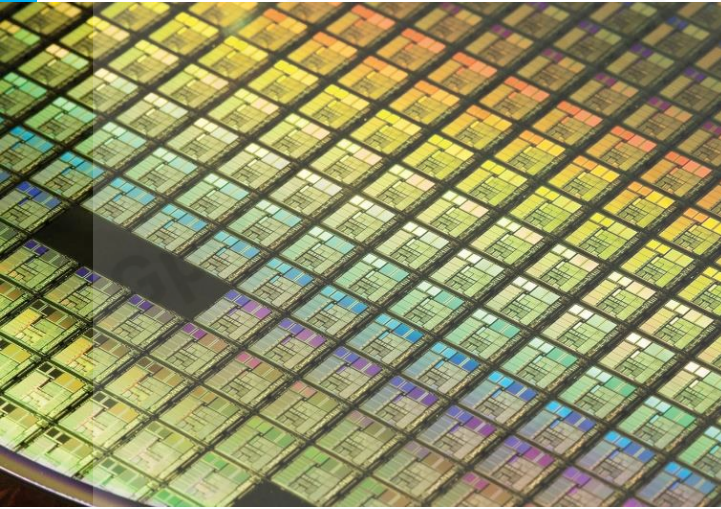


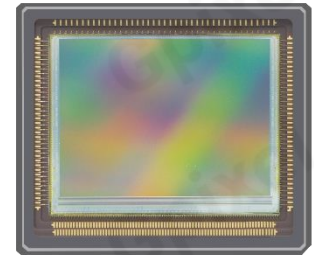
GMAX3265 Product Flyer



65MP GLOBAL SHUTTER IMAGE SENSOR

Featured with the latest generation $3.2\mu\text{m}$ charge-domain global shutter pixel and 65MP (9344x7000) resolution, **GMAX3265** is the leading-edge image sensor with 37.4mm diagonal for high resolution machine vision and industrial inspection applications. This new generation pixel operates with true correlated double sampling (CDS), allowing low read noise and high dynamic range. In addition, the dual light pipe technology provides excellent PLS and angular response.

GMAX3265 is offered in high speed version and normal speed version. High speed version delivers 71fps at 10 bit output, normal speed version delivers 31fps at 12 bit output. The superior resolution and frame rate significantly increases the system throughput for industrial inspection applications, such as semiconductor, PCB, AOI or display inspection. The sensor integrates an on-chip sequencer, programmable through SPI, shortening time-to-market for camera manufactures. **GMAX3265** is assembled with 239-pin micro-PGA ceramic package for reliability and good heat dissipation and a double-sided ARC D263 glass lid.



Key Features

- 3.2 μm Global Shutter pixel
- Image diagonal: 37.4mm
- On chip sequencer and SPI control
- Excellent resolution and significant frame rate
- High speed and Good PLS

Applications

- Industrial Inspection
- Machine Vision
- Metrology
- FPD Inspection

Sensor Specifications

Resolution	9344 x 7000	Optical format	2.3"
Pixel size	3.2 um × 3.2 um	Photo-sensitive area	29.9 mm × 22.4 mm
Shutter type	Global shutter	Quantum efficiency	> 65%
Full well capacity	11ke ⁻	Dark noise	1.9e ⁻ @PGA x6
Shutter efficiency	> 1/15000	Dark current	<1e ⁻ /p/s @ 25°C
Dynamic range	62.3dB @ 10bit 66dB @ 12bit	Frame rate	71fps @ 10bit 31fps @ 12bit
Output interface	56 pairs of sub-LVDS	Channel multiplexing	56/28/14/8/7/4/2/1
ADC	10/12bit	Max. Data rate	50.40 Gbps
Chroma	Mono & Color	Power consumption	< 2.2W
I/O voltage	1.8V - 3.3V	Package	239-pin uPGA 41.75 mm x 35.75 mm

Ordering Information

Sensor Part No.

GMAX3265-BVM-HUT-BU1
High speed, 71fps, 10bit, mono, Grade 1

GMAX3265-BVM-HUT-BU2
High speed, 71fps, 10bit, mono, Grade 2

GMAX3265-BVM-NUT-BU1
Normal speed, 31fps, 12bit, mono, Grade 1

GMAX3265-BVM-NUT-BU2
Normal speed, 31fps, 12bit, mono, Grade 2

GMAX3265-BVC-HUT-BU1
High speed, 71fps, 10bit, color, Grade 1

GMAX3265-BVC-HUT-BU2
High speed, 71fps, 10bit, color, Grade 2

GMAX3265-BVC-NUT-BU1
Normal speed, 31fps, 12bit, color, Grade 1

GMAX3265-BVC-NUT-BU2
Normal speed, 31fps, 12bit, color, Grade 2

GMAX3265-BVM-HUT-BR2
High speed, 71fps, 10bit, mono, Grade 2, Removable

GMAX3265-BVM-NUT-BR2
Normal speed, 31fps, 12bit, mono, Grade 2, Removable

EVK Part No.

EVA-3265-HT10 (10bit) / EVA-3265-NT12 (12bit)
USB interface, 3 stacked PCB boards

Contact Gpixel HQ

Building #5, Optoelectronic
Information Industrial Park,
#7691 Ziyou Road,
Changchun, Jilin, China.

Tel: +86-0431-85077785
Email: info@gpixel.com
Website: www.gpixel.com

Scan me for more information:



All rights reserved.
Subject to change without notice