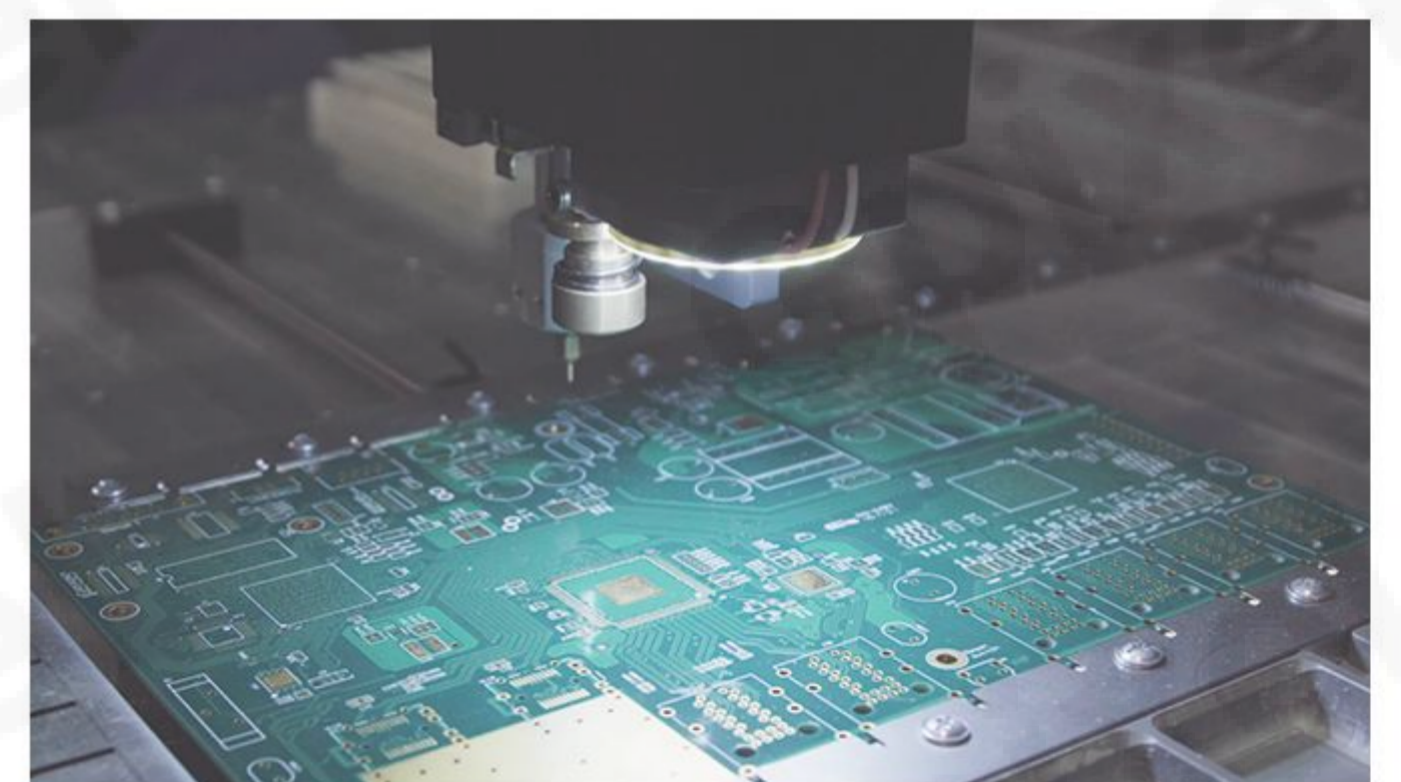


## GL/GLT/GLR Series

### HIGH SPEED LINEAR AND TDI IMAGE SENSORS

#### GL/GLT/GLR

The GL / GLT / GLR product family includes line scan, TDI, and rectangular-pixel linear image sensors in a wide range of horizontal resolutions from 2k to 16k and line rates up to 1 MHz. These sensors feature pixel sizes of 3.5  $\mu\text{m}$ , 5  $\mu\text{m}$ , 7  $\mu\text{m}$ , and 14  $\mu\text{m}$ , providing a comprehensive selection to suit diverse linear array applications.



#### Product Family Features

- ✓ High Line Rates
- ✓ High Dynamic Range
- ✓ High QE
- ✓ GL3504: C-Mount Compatible

#### Applications

- ✓ Industrial Inspection
- ✓ Semiconductor Inspection
- ✓ DNA Sequencing
- ✓ Color Sorting

CMOS Image Sensors	Resolution	Pixel Size (μm <sup>2</sup> )	Optical Format	Shutter Type	Peak QE	FWC Max(ke <sup>-</sup> )	Temporal Noise Min (e <sup>-</sup> )	DR Max (dB)	ADC (bit)	Max Line Rate(kHz)
<b>GLR1205BSI-S</b> 	512 x 1	12.5 x 250	6.4 mm	Global	95%	-	0.58 mV rms	4224:1	-	9.43
<b>GLR1002BSI-S</b> 	2411 x 1	10.0 x 200	24.11 mm	Global	91% (440 nm)	155	20	77.6	12/14	250
<b>GLR1402BSI-M</b> 	2048 x 1	14.0 x 350	28.7 mm	Global	90.7% (420 nm)	176	3.1	95.1	14/12	29
<b>GL1402</b> 	2048 x 1 2048 x 3	14.0 x 14.0	28.9 mm	Global	69% (560 nm)	28.7	9.1	69.9	12	81
<b>GL3504</b> 	4096 x 2 2048 x 4	3.5 x 3.5 7.0 x 7.0	14.3 mm	Global	72% (570 nm)	9.4	4.9	65.8	12/8	172.7
<b>GL0402</b> 	4096 x 2	7.0 x 7.0	28.7 mm	Global	76% (570 nm)	25	5.2	65.6	12	200
<b>GL7004</b> 	4096 x 4	7.0 x 7.0	28.7 mm	Global	75% (560 nm)	10.5	4.3	61.5	10	250
<b>GL0816</b> 	8322 x 16	5.0 x 5.0	41.6 mm	Global	70% (600 nm)	17	13	62	11/10	200
<b>GL7008</b> 	8192 x 4	7.0 x 7.0	57.3 mm	Global	73% (530 nm)	10	6.8	63.3	12	200
<b>GL3516</b> 	16384 x 2	3.5 x 3.5	57.3 mm	Global	57% (560 nm)	8.4	10.6	58.0	10	120
<b>GLT5009BSI</b> 	9072 x (256 + 32)	5.0 x 5.0	45.4 mm	TDI	82% (550 nm)	19.2	7	68.7	12/10	608
<b>GLT5008BSI</b> 	P1: 8208 x 256 P2: 8208 x 32	5.0 x 5.0	41.0 mm	TDI	65.8% (266 nm) 94.2% (460 nm)	17.8	7.4	67.6	12/10	1000
<b>GLT5016BSI</b> 	P1: 16416 x 256 P2: 16416 x 32	5.0 x 5.0	82.0 mm	TDI	UV : 71% (266 nm) VIS : 92% (436 nm)	16.3	7.5	66.1	12	500

**GPIXEL CHINA CHANGCHUN (HQ)**  
Building 5, Optoelectronic Information  
Industrial Park, 7691 Ziyou Road,  
130033 Changchun, Jilin, China  
Phone: +86-431-85077785

**GPIXEL EUROPE**  
Gpixel NV  
Copernicuslaan 60, 2018  
Antwerpen, Belgium  
Phone: +32-33034442

**GPIXEL JAPAN**  
Gpixel Japan Co., Ltd.  
TOC Osaki Building 18th Floor, 1-6-1 Osaki,  
Shinagawa-ku, Tokyo, 141-0032 Japan  
Phone: +81-03-5962-1600



All rights reserved.  
Subject to change without notice