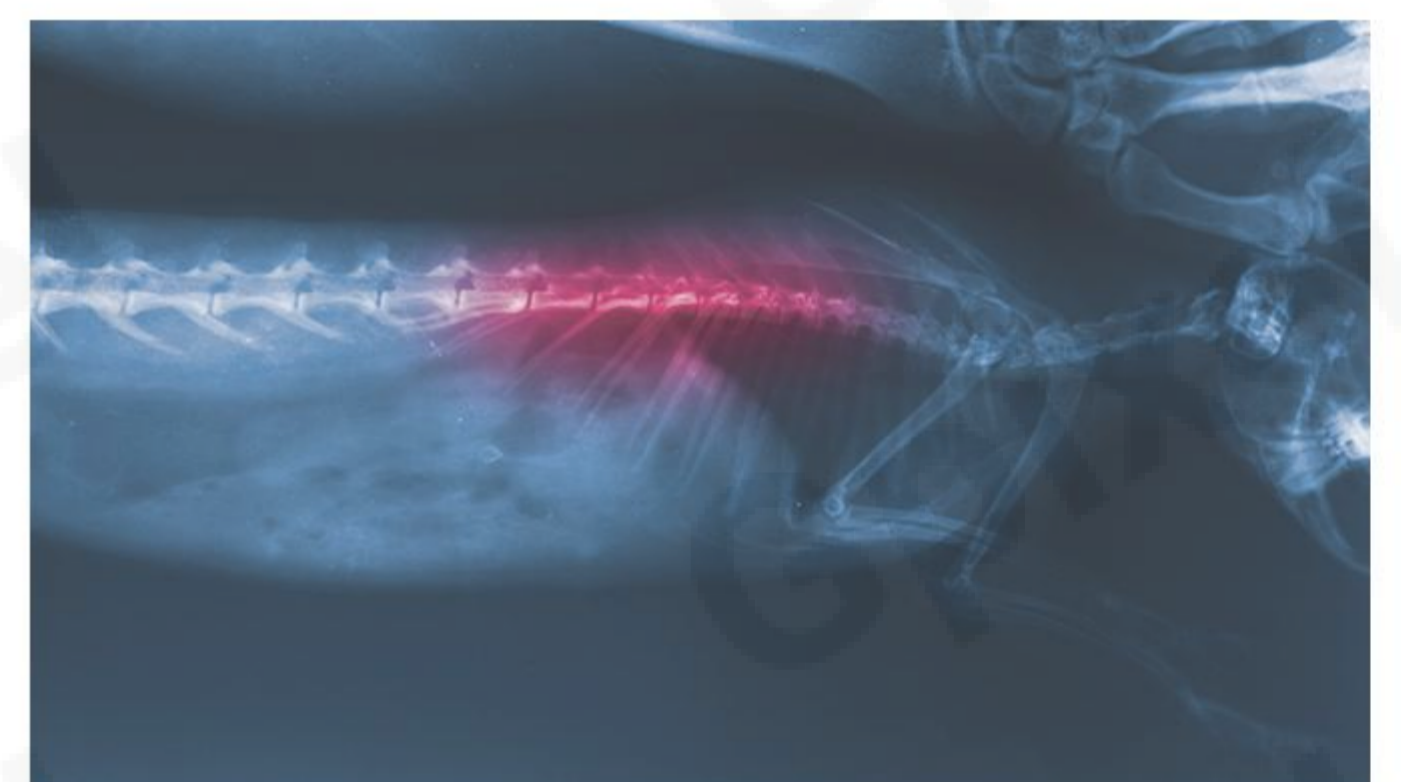
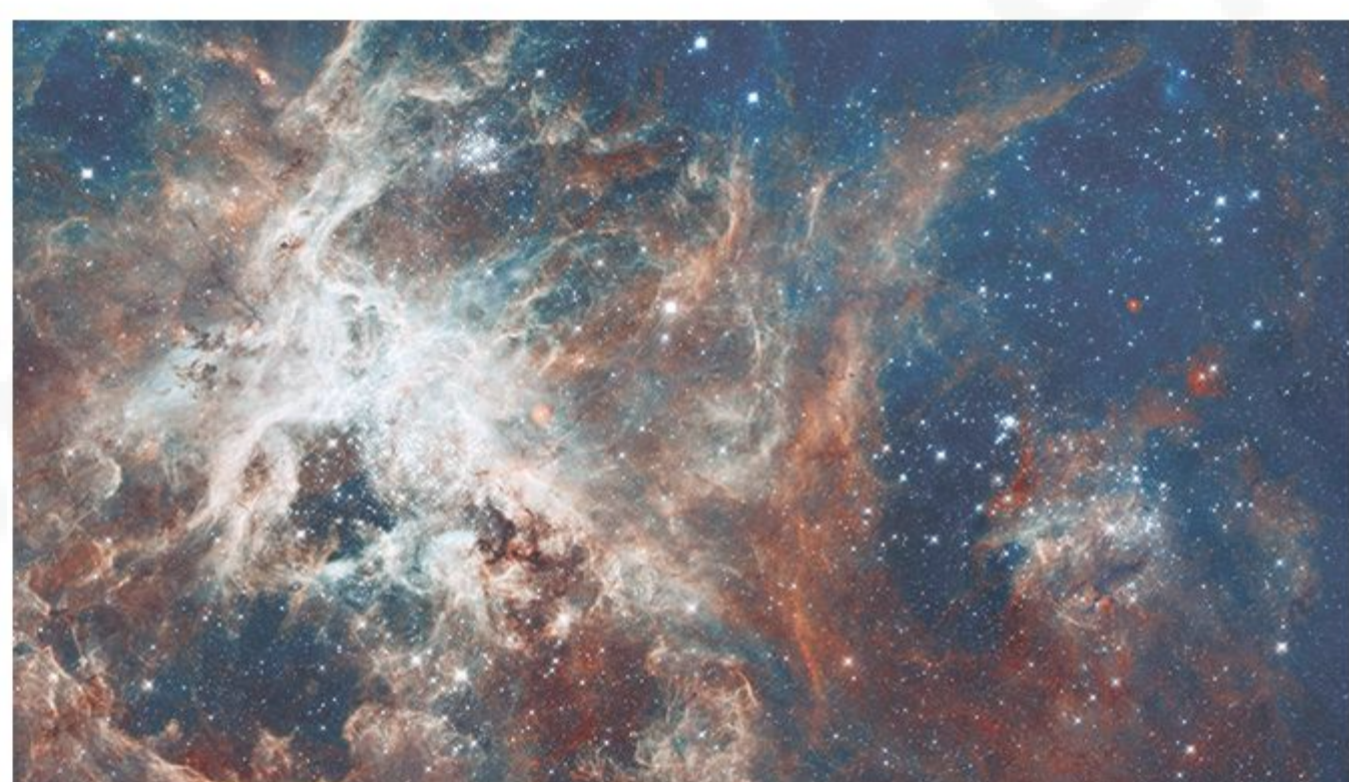


GSENSE Series

SCIENTIFIC CMOS IMAGE SENSORS

GSENSE

The GSENSE series is a world leading scientific CMOS image sensor family, designed with correlated multiple sampling for extreme low noise, true HDR for high dynamic range and optional backside illumination technology for quantum efficiency of up to 97%. Primary applications include scientific imaging, medical imaging, spectroscopy, fluorescence imaging, astronomy, high energy physics, and high-end surveillance.



Product Family Features

- ✓ sCMOS
- ✓ FSI and BSI options
- ✓ HDR dual gain combination to 90 dB
- ✓ Low noise
- ✓ On-chip temperature sensor
- ✓ On-chip SPI sensor
- ✓ Electrical black pixels for offset correction
- ✓ Pixel micro lenses for high QE
- ✓ Removable glass versions

Applications

- ✓ Medical Imaging
- ✓ Scientific Imaging
- ✓ Spectroscopy
- ✓ Fluorescence imaging
- ✓ 3D laser profiling
- ✓ Astronomy

CMOS Image Sensors	Resolution	Pixel Size (μm ²)	Optical Format	Shutter Type	Dark Current (e ⁻ /s/pixel)	Peak QE	FWC Max (ke ⁻)	Temporal Noise Min (e ⁻)	DR Max (dB)	ADC (bit)	Max Frame Rate(fps)
GSENSE6504BSI 	2048 x 2048	6.5 x 6.5	1.2" 18.8 mm	Rolling	0.004 (-30°C)	95% (450 nm)	13.4	0.5	83.4	12	300
GSENSE2020BSI 	2048 x 2048	6.5 x 6.5	1.2" 18.8 mm	Rolling	0.07 (-30°C)	95% (560 nm)	55	1.2	90.5	12/11	74
GSENSE400BSI 	2048 x 2048	11.0 x 11.0	2" 31.9 mm	Rolling	0.27 (-40°C)	95% (570 nm)	91	1.6	95	12	48
GSENSE4040BSI 	4096 x 4096	9.0 x 9.0	3.3" 52.1 mm	Rolling	0.04 (-40°C)	90% (600 nm)	39.2	2.3	84.6	12	24
GSENSE6060 	6144 x 6144	10.0 x 10.0	5.4" 86.9 mm	Rolling	0.01 (-70°C)	72% (550 nm)	133	4.1	89	14/12	44
GSENSE6060BSI 	6144 x 6144	10.0 x 10.0	5.4" 86.9 mm	Rolling	0.04 (-40°C)	95% (580 nm)	95	3	90	14/12	26
GSENSE3243BSI 	8192 x 5232	3.2 x 3.2	1.2" 31.1 mm	Rolling	7.8 (40°C)	80% (550 nm)	85	2	83	14	100
GSENSE6510BSI 	3200 x 3200	6.5 x 6.5	1.9" 29.4 mm	Rolling	0.2 (-10°C)	95% (610 nm)	21	0.7	78.8	12/11/8	500
GSENSE1517BSI 	4116 x 4100	15.0 x 15.0	5.45" 87.1 mm	Rolling	0.008 (-70°C)	92% (450 nm)	70	1.2	95.3	16	4
GSENSE1081BSI 	8900 x 9120	10.0 x 10.0	7.96" 127.4 mm	Rolling	0.00373 (-70°C)	97% (610 nm)	90.7	5.4	84.5	16/15	0.9
GSENSE64105BSI 	10240 x 10240	6.4 x 6.4	24 pairs of LVDS	Rolling	6.28 (20°C)	75% (550 nm)	110	1.25	98.8	12/13	1.25

GPIXEL CHINA CHANGCHUN (HQ)
 Building 5, Optoelectronic Information
 Industrial Park, 7691 Ziyou Road,
 130033 Changchun, Jilin, China
 Phone: +86-431-85077785

GPIXEL EUROPE
 Gpixel NV
 Copernicuslaan 60, 2018
 Antwerpen, Belgium
 Phone: +32-33034442

GPIXEL JAPAN
 Gpixel Japan Co., Ltd.
 TOC Osaki Building 18th Floor, 1-6-1 Osaki,
 Shinagawa-ku, Tokyo, 141-0032 Japan
 Phone: +81-03-5962-1600



All rights reserved.
 Subject to change without notice