

# GLUX9701BSI

1.3 MP 9.76  $\mu\text{m}$  ROLLING SHUTTER CMOS IMAGE SENSOR

**GLUX9701BSI** is a 1.3 Megapixel resolution BSI CMOS image sensor with 9.76  $\mu\text{m}$  x 9.76  $\mu\text{m}$  pixel size. The sensor operates in electronic rolling shutter supporting two operation modes: HDR mode and Low Noise mode. Users can choose which to operate in camera based on practical application' s requirement on frame rate, noise, dynamic range, power consumption, etc.

With two types of data output channels: a 4 channel pairs Sub-LVDS and MIPI (CSI-2, D-PHY) running at 445.5 MHz, achieving frame rate of 30 fps to flexibly match either ISP or FPGA components being used in camera electronics. Various operating functions are available including master mode, slave mode, standby mode, etc, making **GLUX9701BSI** useable for different imaging conditions.



## Key Features and Benefits

- ▶ High Sensitivity
- ▶  $< 1 e^-$  Readout Noise
- ▶ High Dynamic Range

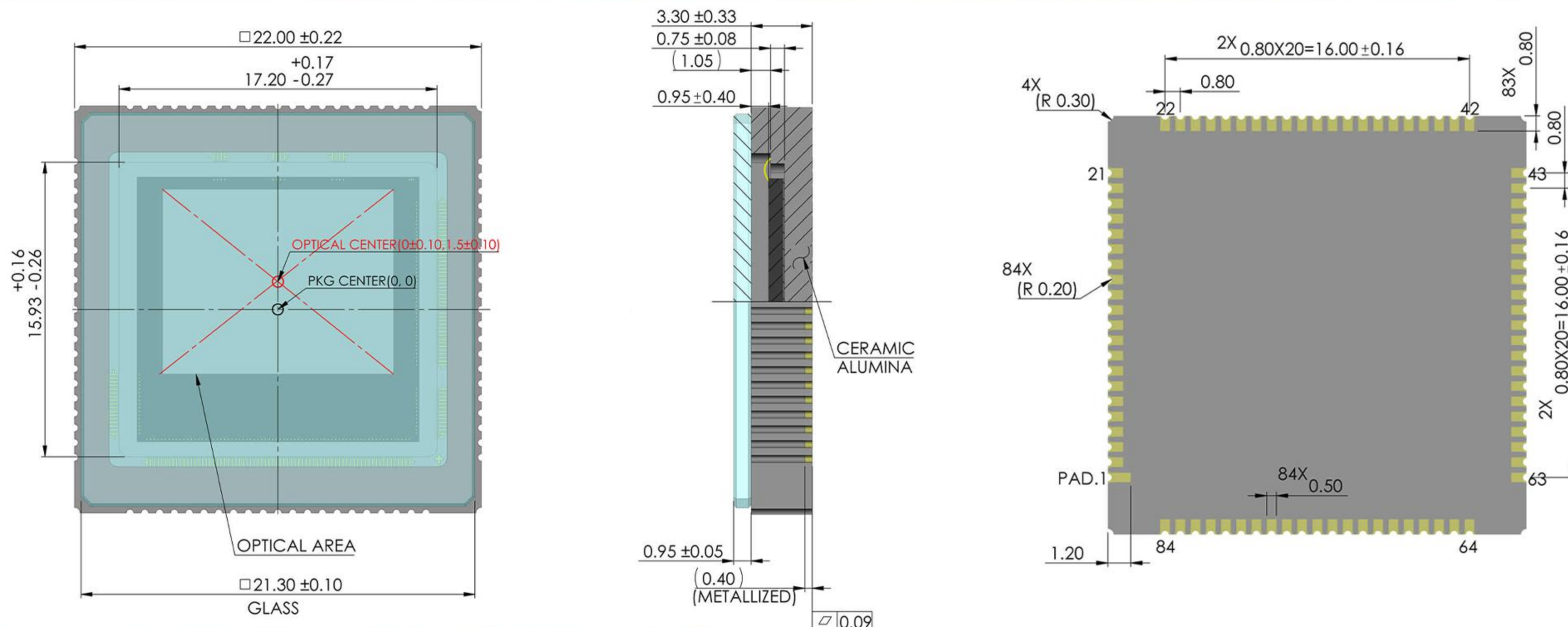
## Applications

- ▶ Microluminescence Imaging

# Specifications

Nr of Active Pixels	1280 (H) x 1024 (V)	Optical Format	1"
Pixel Size	9.76 $\mu\text{m}$ x 9.76 $\mu\text{m}$	Photosensitive Area	12.493 mm x 9.994 mm
Shutter Type	Rolling Shutter	Peak QE	89% (610 nm)
Full Well Capacity	48 ke <sup>-</sup>	Temporal Noise	1.6 e <sup>-</sup> (HDR HG) 0.85 e <sup>-</sup> (Low Noise)
Dark Current	0.08 e <sup>-</sup> /pixel/s (-28°C)	Dynamic Range	89.5 dB (HDR)
Max Frame Rate	30 fps	Output Format	4 ch Sub-LVDS 4 ch MIPI
Max. Data Rate	1.782 Gbps	ADC	12 bit
Chroma	Mono	Power Consumption	250 mW (HDR) 122 mW (Low Noise)
Supply Voltage	3.3 V (Analog) 1.8 V (Digital)	Package	84 pins CLCC (22.0 mm x 22.0 mm)

# Package Drawing



# Contact Gpixel

## GPIXEL CHINA CHANGCHUN (HQ)

Building 5, Optoelectronic Information  
Industrial Park, 7691 Ziyou Road,  
130033 Changchun, Jilin, China  
Phone: +86-431-85077785

Disclaimer: The product information and pictures in this flyer are for reference only. For the latest information please visit [www.gpixel.com](http://www.gpixel.com).  
GP-PR250801 V1.1

## GPIXEL EUROPE

Gpixel NV  
Copernicuslaan 60, 2018  
Antwerpen, Belgium  
Phone: +32-33034442

## GPIXEL JAPAN

Gpixel Japan Co., Ltd.  
TOC Osaki Building 18th Floor, 1-6-1 Osaki,  
Shinagawa-ku, Tokyo, 141-0032 Japan  
Phone: +81-03-5962-1600

