

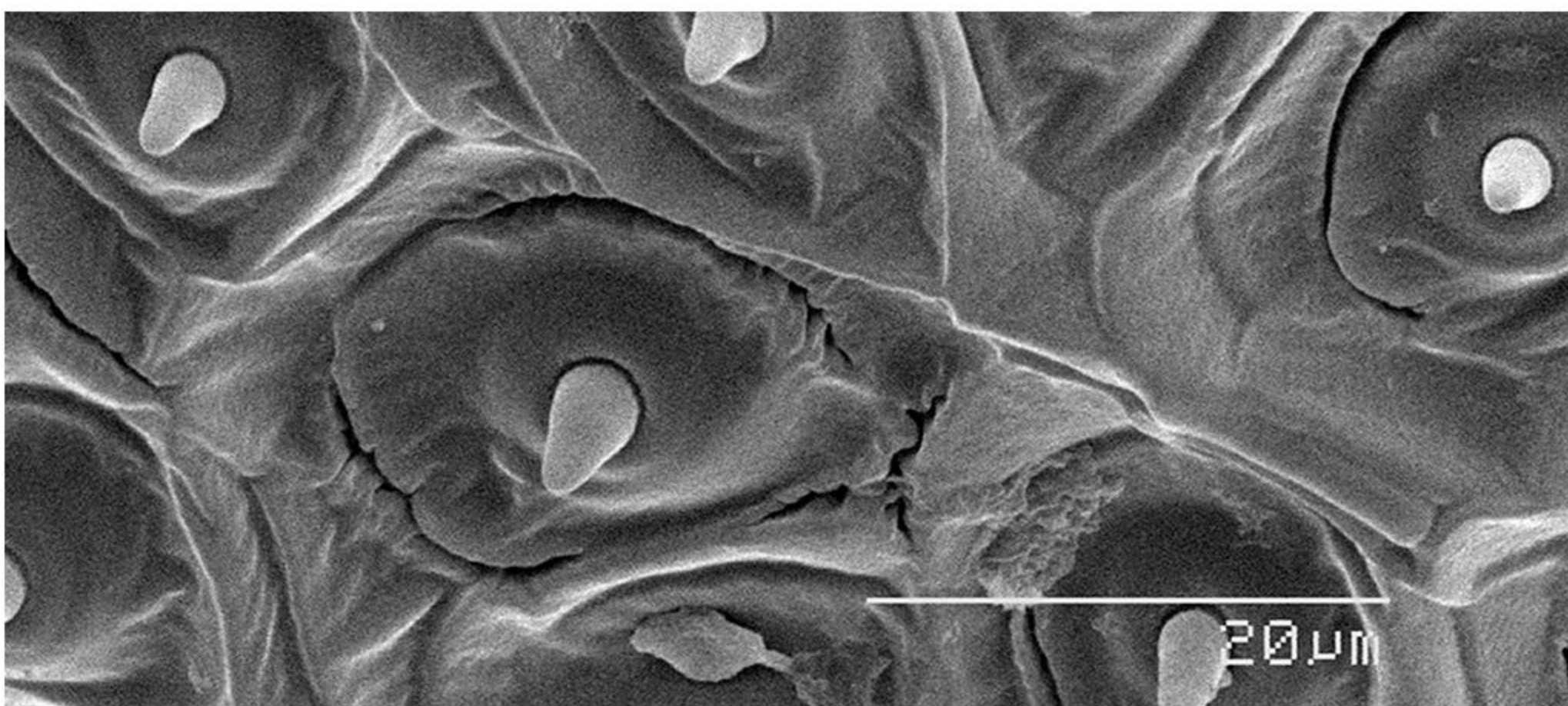


GSENSE6060

37 MP ROLLING SHUTTER IMAGE SENSOR

GSENSE6060 and its pin-compatible back-thinned version GSENSE6060BSI, are designed with a large imaging area for demanding astronomical and scientific imaging applications. With its top and bottom readout chains consisting of 2×25 LVDS pairs running up to 630 MHz, GSENSE6060's frame rate is up to 44 fps with 12 bit ADC, allowing scientists to observe with the never-achieved temporal resolution of large format imagers. The two readout chains also provide the possibility for HDR combination up to 89 dB.

The Aluminum Nitride package of GSENSE6060 provides 10x thermal conductivity than the traditional Alumina package, as well as excellent flatness both at the room temperature and deep-cooled temperatures.



Key Features and Benefits

- ▶ Large Format Scientific CMOS
- ▶ Peak QE of 71.5%
- ▶ 14 bit with CMS

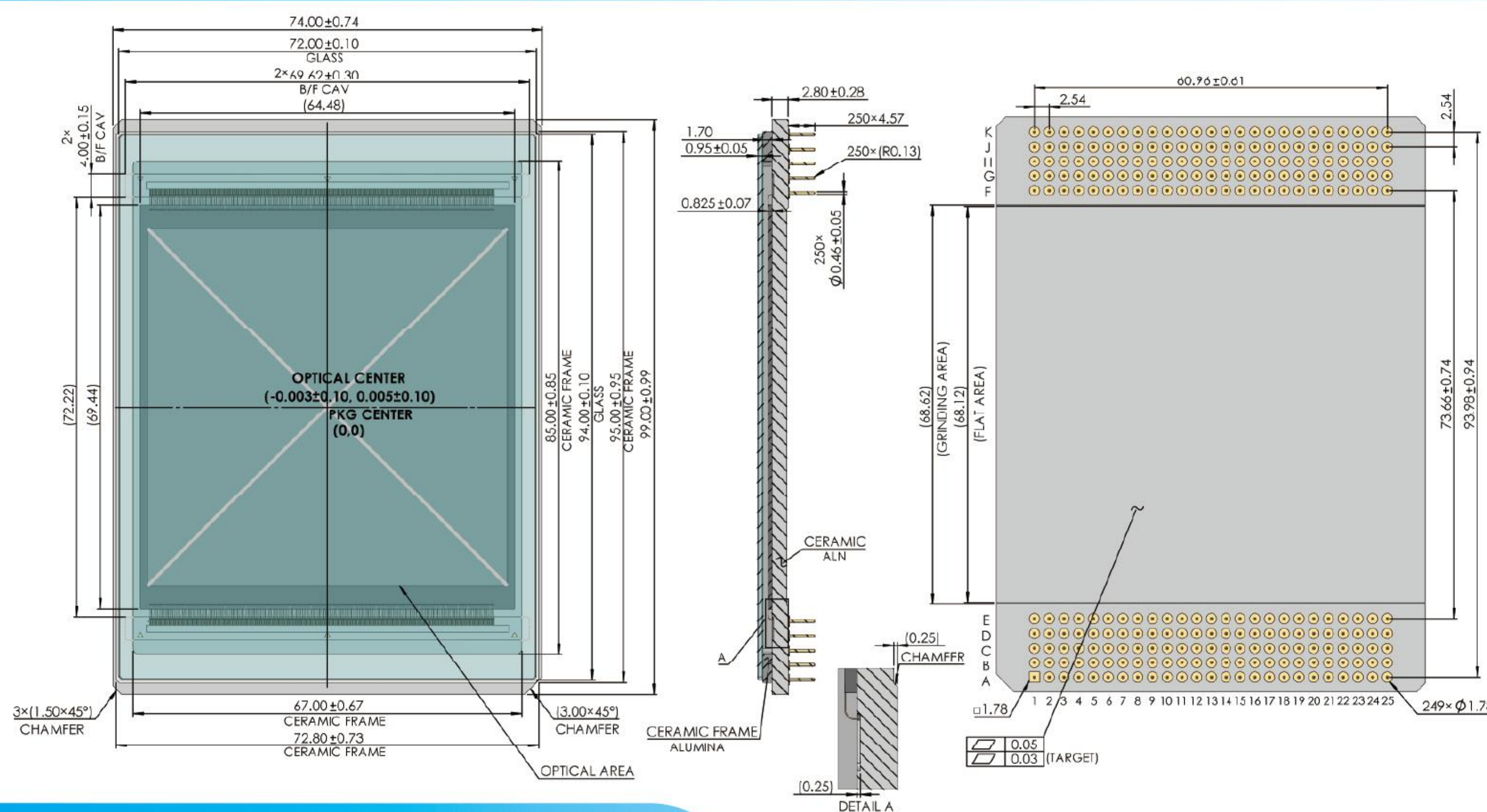
Application

- ▶ Spectroscopy
- ▶ Life Sciences
- ▶ Astronomy
- ▶ Microscopy
- ▶ X-Ray

Specifications

Nr of Active Pixels	6144(H) x 6144(V)	Optical Format	5.4"
Pixel Size	10 μm x 10 μm	Photosensitive Area	61.44 mm x 61.44 mm
Shutter Type	Rolling Shutter	Peak QE	71.5% (550 nm)
Full Well Capacity	133 ke ⁻	Temporal Noise	4.1 e ⁻
Dark Current	0.01 e ⁻ /pixel/s (-70°C)	Dynamic Range	89 dB (12 bit,HDR)
Max Frame Rate	44 fps (12 bit,STD)	Output Format	50 ch LVDS
Max. Data Rate	31.5 Gbps	ADC	12/14 bit
Chroma	Mono	Power Consumption	5 W
Supply Voltage	5 V (analog) 1.85 V (digital)	Package	250 pins PGA (74 mm x 99 mm)

Package Drawing



Contact Gpixel

GPIXEL CHINA CHANGCHUN (HQ)

Building 5, Optoelectronic Information
Industrial Park, 7691 Ziyou Road,
130033 Changchun, Jilin, China
Phone: +86-431-85077785

GPIXEL EUROPE

Gpixel NV
Copernicuslaan 60, 2018
Antwerpen, Belgium
Phone: +32-33034442

GPIXEL JAPAN

Gpixel Japan Co., Ltd.
TOC Osaki Building 18th Floor, 1-6-1 Osaki,
Shinagawa-ku, Tokyo, 141-0032 Japan
Phone: +81-03-5962-1600



Disclaimer: The product information and pictures in this flyer are for reference only. For the latest information please visit www.gpixel.com.
GP-PR250801 V1.1